

Residents Visit Venice WBS

On April 14th, residents visited Venice's water booster station off Gene Green Road. The visit was sponsored by the [VGRC Community Association](#) and was very informative of the impact of the WBS to Venice, operations of utilities during an emergency, and the general strategy of water treatment and distribution in Venice. Residents appreciated the opportunity to visit the site, engage in a free-flow Q&A, and receive very knowledgeable information from city officials.



We were impressed with the redundancy incorporated into the operations of the city water supply. The facility was built to withstand a Category 5 hurricane. In addition to a backup power diesel generator, a solar farm nearby provides power for WBS operations as well as overflow power to reduce city electric bills. Remote control of water operations is available within the site as well as emergency

processing of water. The current water treatment plant for the city near the island is in a flood zone and requires relocation or hardening. Studies are underway for the city to make that decision in the next few years.

Emphasized during discussions were 2 points of value to the residents:

1. Check your backflow preventer for leaks and ask [Venice Utilities](#) for a maintenance check. They own and maintain your water service line from the main to your backflow preventer. Plumbers should not be permitted to replace them.

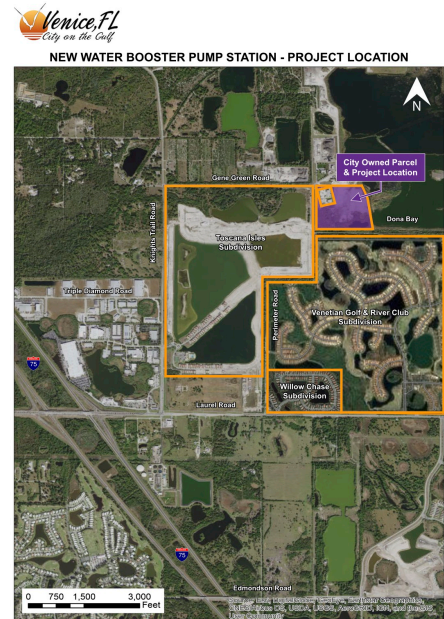
2. Download the [Eye-on-Water](#) application to provide records of household water usage as well as a prompt notification of a water leak. See [THIS](#) article for more information.

It is clear that the water booster station is a valuable addition to the area; however, it is also evident that the station has not provided a sizable increase to local Northeast water pressure originally expected by residents. However, it has stabilized the pressure and reduced drops in water pressure routinely encountered prior to the facility's operations.

The WBS pulls water from the water main in Laurel Rd via the new 16-inch water mains installed along Perimeter Rd and Gene Green Rd to fill a 2-million-gallon tank on site during the hours 11 p.m. through 6 a.m. During those hours, residents may realize a sizable drop in water pressure, up to 8 or 9 psi (pounds per square inch). At 6 a.m., the booster pumps are turned back on to raise and stabilize water pressure.

Measured by city utilities, water pressure in northeast Venice fluctuates between 51 and 52 psi, with 51 to 54 psi being maintained across the city. That psi may not be realized within your home at the Venetian due to potential restrictions: low water flow fixtures and clogged aerators at the residence, not flushing hot water heaters often enough, corrosion and debris build-up, blocked back-flow preventers on the property, water treatment/filtration systems or fixtures (can create significant pressure losses), underside home plumbing compared to current standards and codes, etc. One solution available to residents to increase pressure is installation of a small water booster pump within your home.

In summary, the main benefits of the WBS are stabilization of the water pressure levels and an increase in reliability pressure levels to facilitate firefighting water requirements.



**VGRC Community Association
April 2026**